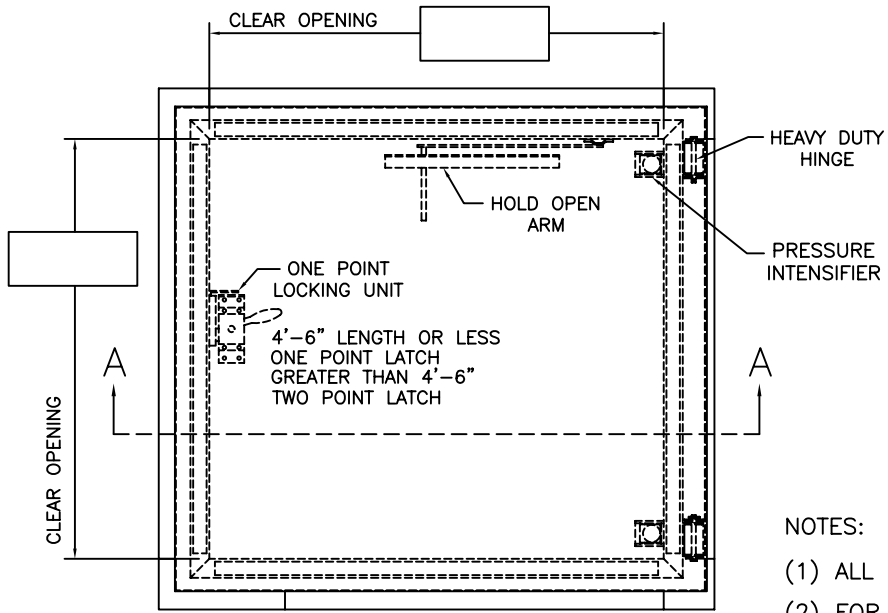
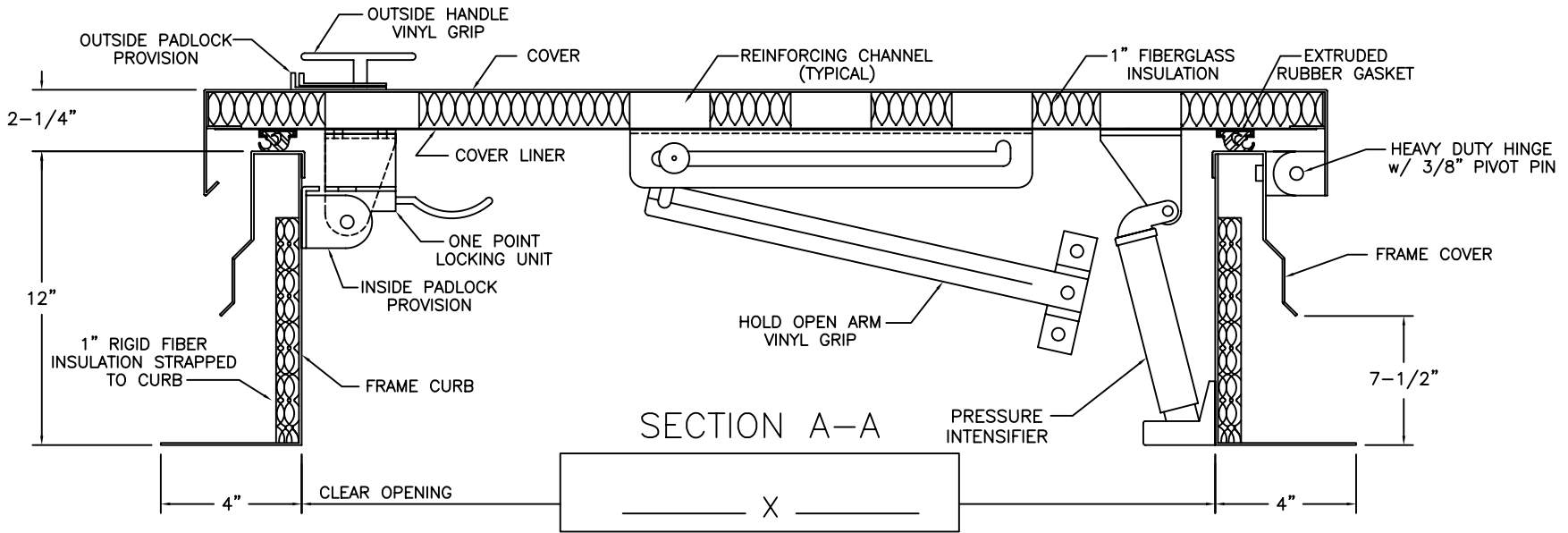


PRECISION LADDERS ROOF HATCH



SELECT HATCH MATERIAL: (IF LEFT BLANK GALV STEEL IS DEFALT)

- GALVANIZED STEEL (PRIME PAINTED)
COVER - 14 GA. GALV STEEL
FRAME COVER - 14 GA. GALV STEEL
FRAME CURB - 14 GA. GALV STEEL
COVER LINER - 22 GA. GALV STEEL
- OR
- ALUMINUM (MILL FINISH)
COVER - 11 GA. ALUMINUM
FRAME COVER - 11 GA. ALUMINUM
FRAME CURB - 11 GA. ALUMINUM
COVER LINER - 18 GA. ALUMINUM

- #### TYPICAL OPTIONS:
- 1-1/2" CURB INSULATION
 - DOUBLE WALL CURB
 - STAINLESS STEEL HARDWARE

NOTES:

- (1) ALL MOUNTING HARDWARE TO BE SUPPLIED BY OTHERS.
- (2) FOR OPERATING EFFICIENCY, HATCH HARDWARE VARIES BY SIZE.

APPROVED FOR FABRICATION:

(AUTHORIZED SIGNATURE)

(REQUESTED SHIP DATE)

FACTORY FINISH
GALV - PRIME PAINTED
ALUM - MILL FINISH

PH

NOT TO SCALE

EXAMPLE MODEL#: PH- A/G OPENING SIZE IN FEET-INCHES (PH-G2630)



Precision Ladders, LLC
P.O. BOX 2279 Morristown, TN 37816-2279
Ph: (423) 586-2265 Fax: (423) 586-2091
www.PrecisionLadders.com

WORK ORDER: ()	DWG. CHECK	ARCH'T OR ENG'R.	PROJECT		PRECISION REP
	BUILT BY:	PURCHASE ORDER	REVISION	PURCHASER	SERIAL#
	CHECKED BY:	DRAWN BY: DNH	DATE: 11/19/15	MODEL# PH-	QTY.