



Assembling a Knocked Down Cage

General Notes:

- Do not tighten nuts and bolts until completed cage assembly***
- Top of ladder has yellow safety caps or rung flush with top***



1.

Layout flat bar on the ladder. Find the lower end of flat bar and place at the bottom of the ladder.

-Bottom of flat bar has bottom hole and next hole exactly 4 feet apart



2.

Layout rings on the ladder. The largest ring is at the bottom of the ladder.

-The bottom ring is the largest. All other rings are the same size as each other.



3. Place bottom ring upright on the first set of holes from the bottom of the ladder (typically 7'-6" from bottom).
-Rings fit on the outside of the ladder's side rails.



4.

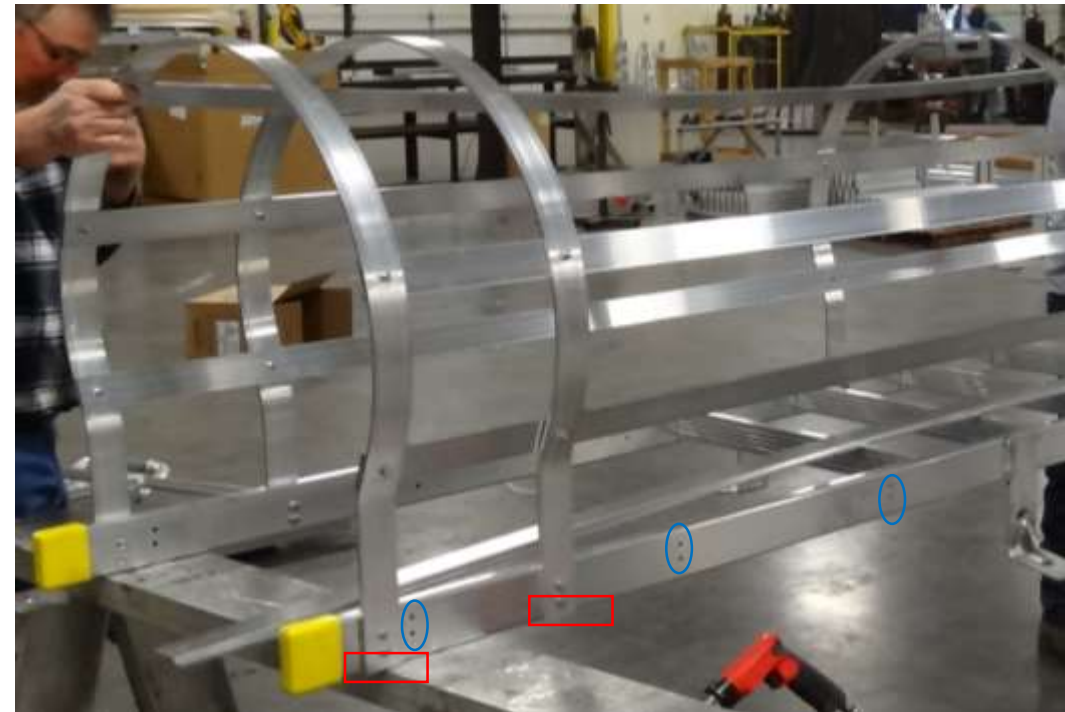
Place carriage bolts through side rails and ring.
-The rounded portion of bolts should be on the inside of the climbing side of the cage.





5.

Place next ring upright and bolt
(continue for all rings until complete)
*-When multiple holes are at the top of
the ladder, make sure rings fit holes
that become flush with the backside of
the ladder side rails.*





6.

Connect flat bar, one at a time, to the inside of the bottom ring and bolt together (work up the rings until complete). Attach each flat bar to rings.

-If one man installing, start by bolting middle of flat bar to middle ring and work out





7.
The cage should look complete. Tighten all bolts.



8.

If E-Safety Rail is included on top of the ladder, attach E-Safety Rail to outside of ladder side rails.

The E-Safety Rail attaches to the backside of the ladder (opposite side of the cage) with carriage bolts.

-The rounded portion of bolts should be on the inside of the climbing side of the ladder.



Installation Time:

-2 Men = 30 Minutes

-1 Man = 1 hour

Tools Needed:

- Wrenches and/or Ratchet Socket Set
- Tape Measure
- Hammer
- Cordless drill (might be needed to make holes easier)